

DESCRIPTION

Solenoid valve 2 way normally closed direct acting poppet type, suitable for food application and all compatible fluids.

CONSTRUCTION

Body	Thermoplastic polymer: NSF, WRC, KTW, FDA certified
Armature tube	Brass chemically nickel plated
Plunger and core	Stainless steel
Springs	Stainless steel
Seal material	NBR food contact certified FPM food contact certified EPDM food contact certified

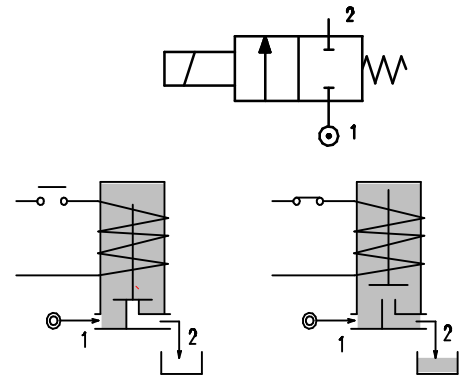


2

FEATURES

Maximum allowable pressure 30 bar *
 Maximum fluid viscosity 25cSt (mm²/s)
 Ambient temperature : with class F coil -10°C +55°C
 with class H coil -10°C +80°C
 Universal mounting position

OPTIONS : Stainless steel armature tube
 Type N connection without nut



CONNECTIONS					
K	N	P	W ③	Y	Z
SPIGGOT	G1/8" male thread with NUT for flexible and semiflexible pipes	HOSETAIL for flexible pipes	COMPRESSION for flexible and semiflexible pipes	PUSH IN for semiflexible pipes Øext.6	PUSH IN for semiflexible pipes Øext.4

CODE ① ②	Connection * *	Orifice mm	KV m ³ /h	Differential pressure bar			Nominal power			Coil		Seal ①	Temp. range ** °C
				Min	Max		AC Inrush	VA Holding	DC Watt	Series	Width		
					AC	DC							
E135*...15///.....	K-N-P-W-Y-Z	1.5	0.06	0	16	16	12	8	6.5	3	22	NBR=A	-10 +90
E135*...20///.....	K-N-P-W-Y-Z	2	0.09	0	12	10							
E135*...25///.....	K-N-P-W-Y-Z	2.5	0.14	0	8	5.5							
E135*...30///.....	K-N-P-Y	3	0.19	0	4.5	2							
E135*...40///.....	N-P-Y	4	0.35	0	2.5	1.2	15	11	5	4	30	EPDM=E	<+140
E135*...20///.....	K-N-P-W-Y-Z	2	0.09	0	25	15							
E135*...25///.....	K-N-P-W-Y-Z	2.5	0.14	0	16	8							
E135*...30///.....	K-N-P-Y	3	0.19	0	8	4							
E135*...40///.....	N-P-Y	4	0.35	0	5	2.5						FPM=V	-10 +130

① Seal Example: E135KA20///30B NBR seal SPIGGOT connection
 ② Coil Coil 24V 50/60Hz
 ③ Only for connection "W" E135W..../1/....

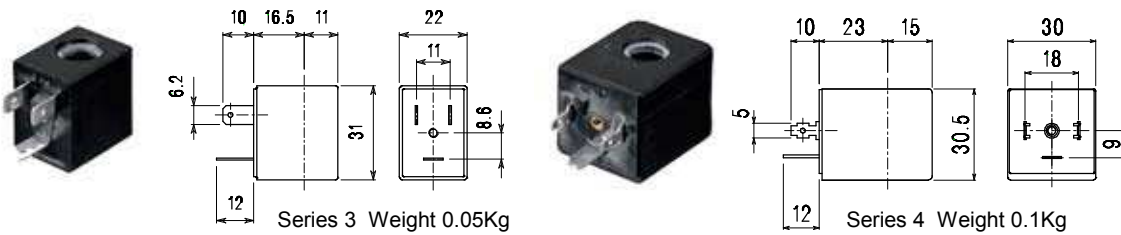
REMARK: The maximum allowable pressure PS for steam is 2,5bar (gauge pressure)

** The temperature range is related to the material of the seals (NBR, EPDM, FPM), and the valves' body. Please contact us concerning the temperature range referred to the different types of connection.

COILS	Alternating Current ~50/60Hz Volt							Direct Current Volt			Electrical connection	Connectors
	12	24	48	110	220 230	240	380	12	24	48		
Series 3 Width 22 Code ②	30A	30B	30C	30D	30E	30F	30G	300	301	302	DIN 46244	PG9 code 10348000
Series 4 Width 30 Code ②	40A	40B	40C	40D	40E	40F	40G	400	401	402	DIN 43650A	PG9 code 10349000

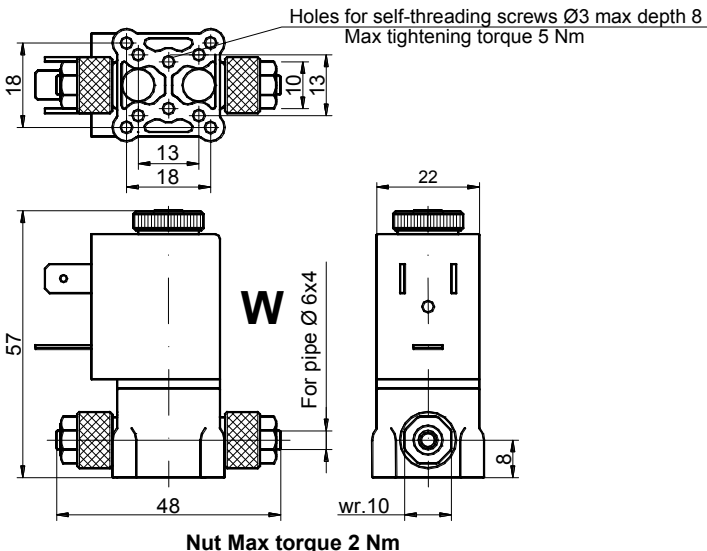
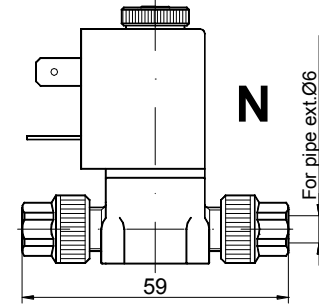
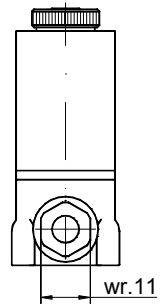
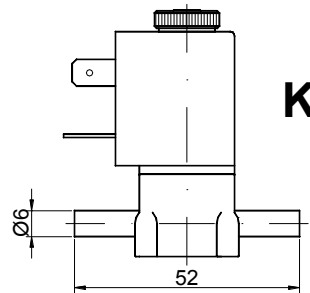
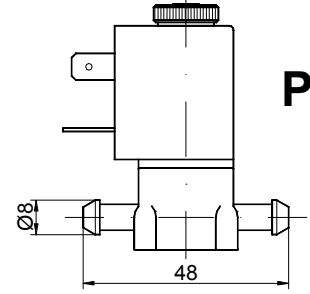
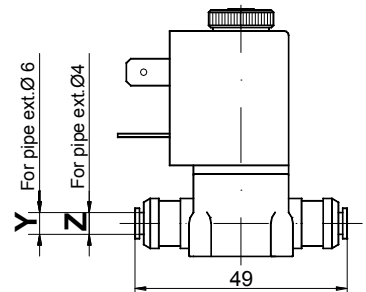
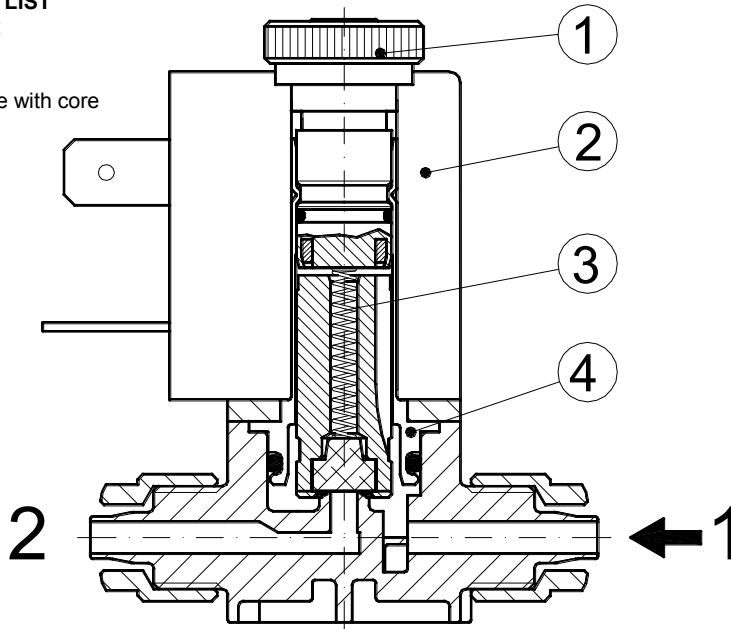
DESCRIPTION
 Class F insulation
 Voltage tolerance
 AC +15% -10%
 DC ± 10%
 Protection class
 IP65 with connector fitted
 IP00 without connector
 Continuous service ED100%

OPTIONS
 Class H insulation
 Cable attached
 Special coil voltages
 Special coil powers



SPARE PARTS LIST

1. Coil fixing nut
2. Coil
3. Plunger
4. Armature tube with core



Screw the nut with wrench 11 up to the sliding on the hexagon (TORQUE LIMITING DEVICE)

Weight with coil series 3 = 0.10 Kg
 Weight with coil series 4 = 0.15 Kg